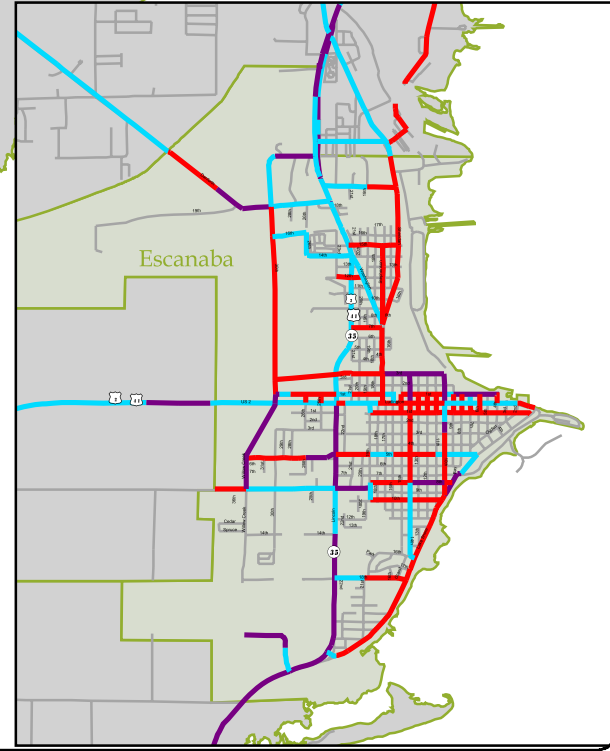
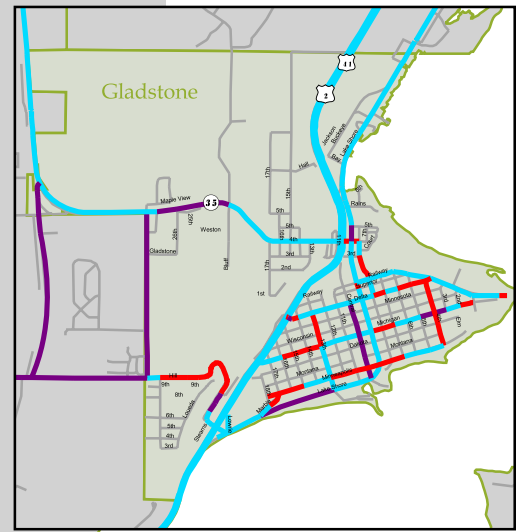
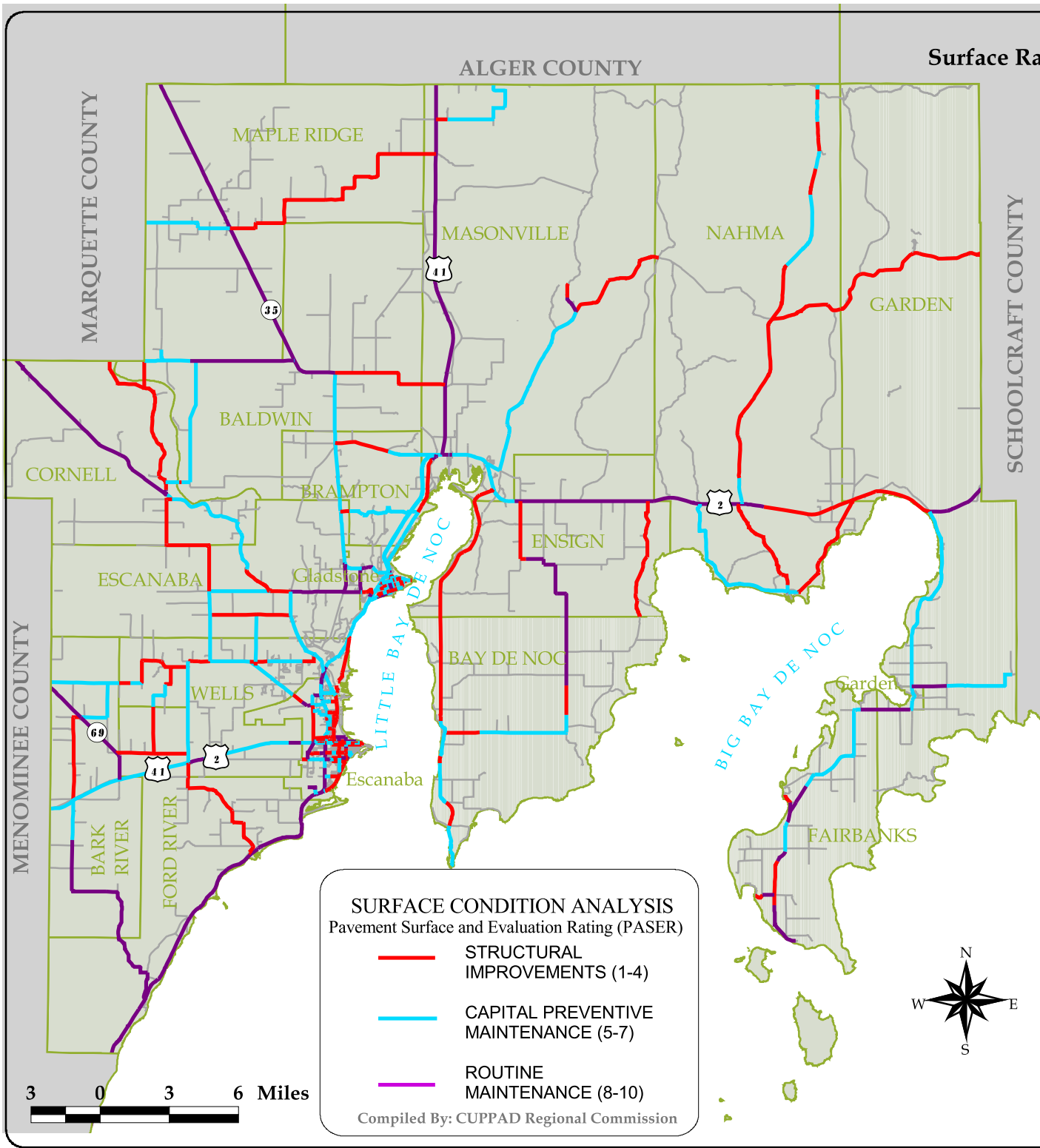


Asset Management
Surface Rating of Paved Federal Aid Eligible Roads
DELTA COUNTY, 2007



SURFACE CONDITION ANALYSIS
 Pavement Surface and Evaluation Rating (PASER)

- STRUCTURAL IMPROVEMENTS (1-4)
- CAPITAL PREVENTIVE MAINTENANCE (5-7)
- ROUTINE MAINTENANCE (8-10)

Compiled By: CUPPAD Regional Commission