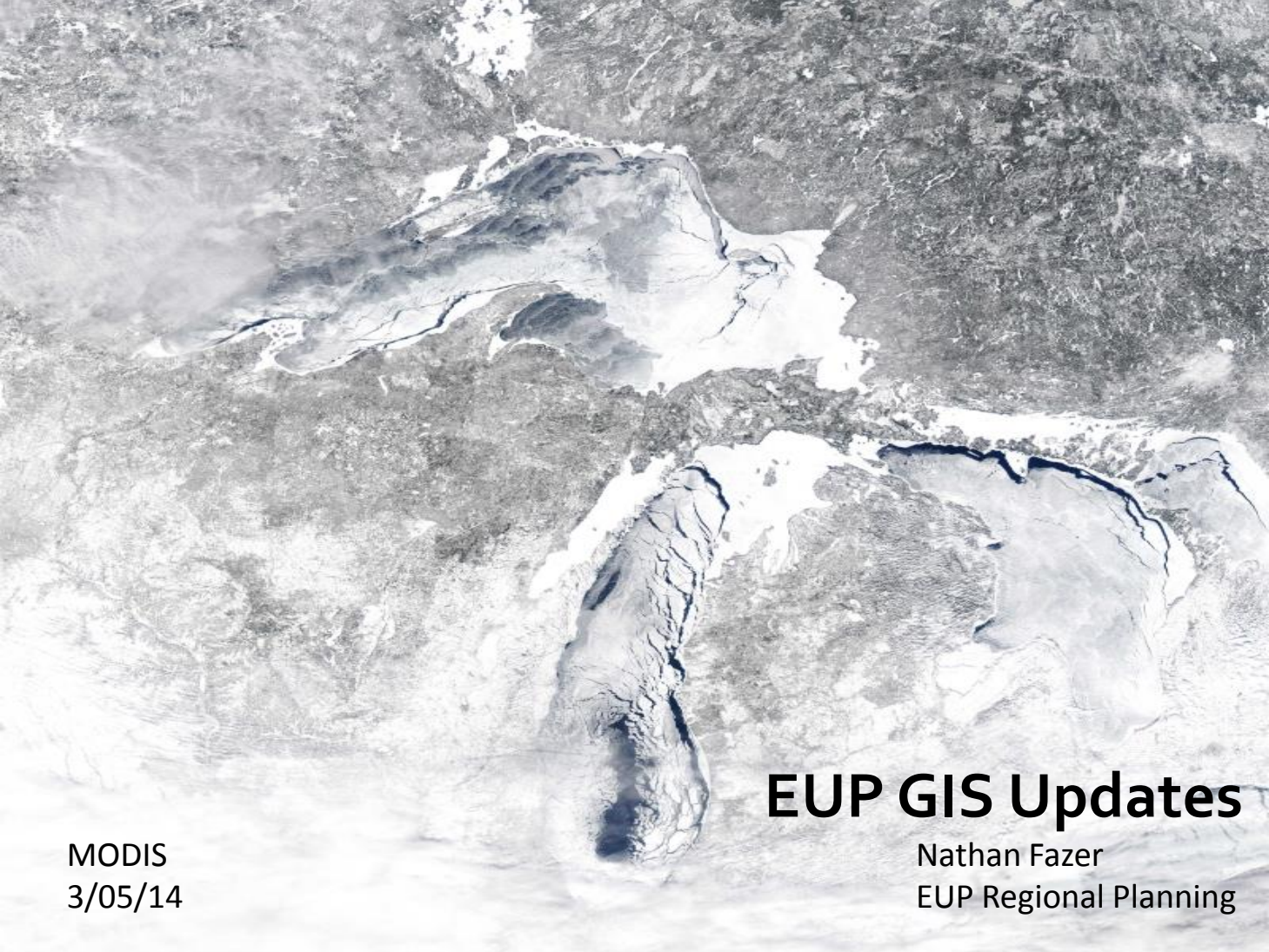


MODIS
2/19/14

EUP GIS Updates

Nathan Fazer
EUP Regional Planning



MODIS
3/05/14

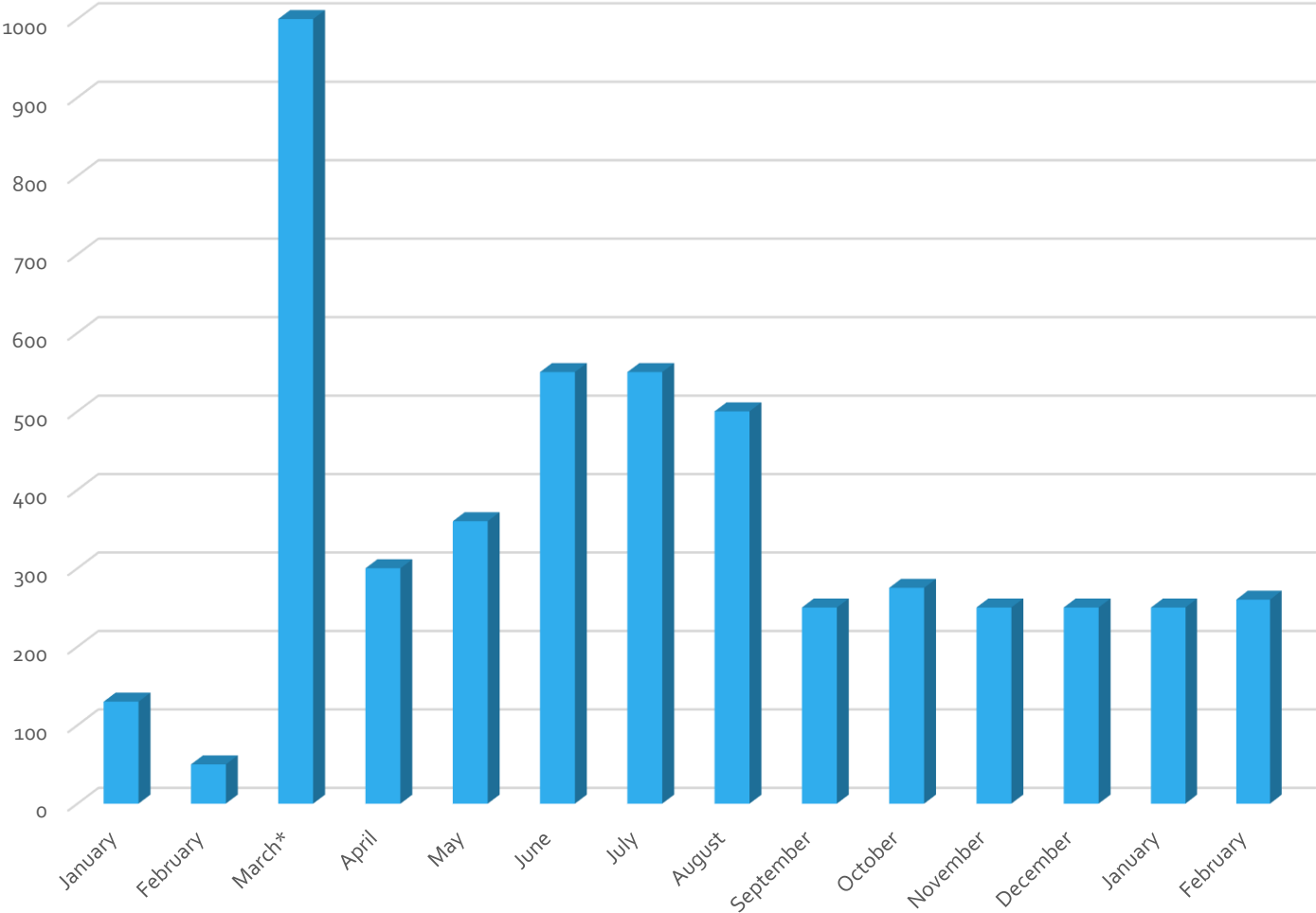
EUP GIS Updates

Nathan Fazer
EUP Regional Planning

EUPRPDC GIS

- Continue to use ArcGIS Online for web applications
- [Sugar Island Washout Map](#) – 700+ views
- Updated [Demographics Map](#)
- Local Foods Map for East Michigan COG
- Renewed subscription April 2013 - \$2,500
 - With 10.2, each Desktop License receives one AGO user login
 - We will be buying \$500 worth of credits, utilizing our 2 logins
 - Currently Average 300 Credits per month x 12 months = 3,600

AGO Credits

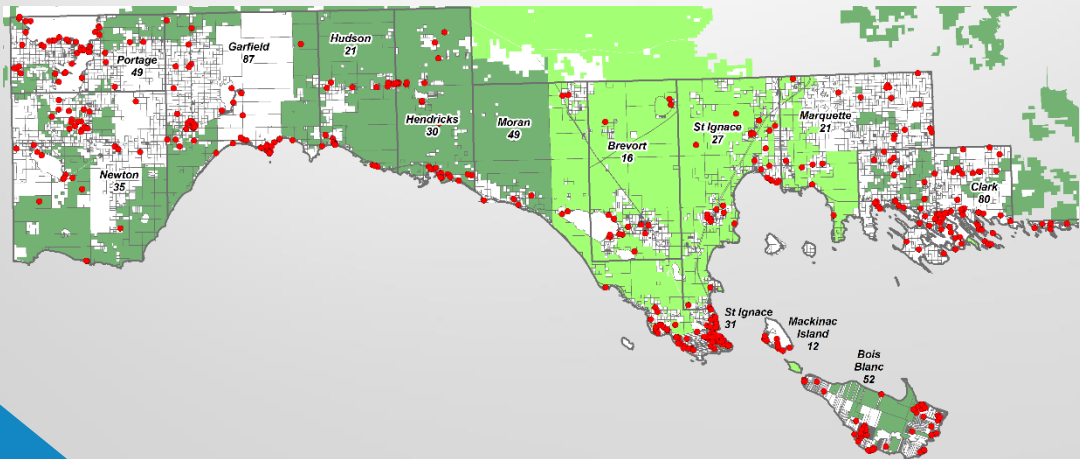


County GIS Partnerships

- January 2013 – Agreements with Chippewa and Mackinac Counties to provide GIS support and development
- Have deployed File Geodatabases to each County
- Each County EQ Department has Desktop Basic
 - Other Departments will get ArcGIS Explorer Desktop
- Slowly tweaking layers and working on GDB's
 - Annotation, map templates for printing, etc.
- Will hold trainings for County staff in future

County GIS Partnerships

- Mackinac County Parcel Project
 - COGO'd parcel project in 2013 identified almost 500 issues
 - EUP is doing maintenance
 - Currently all but 4 Townships in County have County EQ Department maintain legal descriptions
 - Goal is to get all Townships involved in County program so as to have a centralized authority



Regional GIS

- Will be organizing and forming a Regional GIS Committee
 - EQ Departments, 911, Township Reps, Assessors
 - Committee will provide input on projects, needs, data standards
 - Will meet quarterly
 - Will provide support in education and outreach
- [Fetch Web Mapping](#) and Land Information System
 - Will provide easy access to base GIS data and parcel information
 - Similar to [Otsego County](#)

Current/Upcoming GIS Projects

- M-123 Trail Plan/Study
 - Non-motorized plan/study along M-123 Byway looking at options and alternatives for a non-motorized network
- Hiawatha National Forest East ORV Trail Connection Study
 - Using 2013 MVUM Dataset
 - Use Network Analyst to analyze USFS data and focus primarily on USFS Level 2 roads, which are open to ORVs.
 - Will provide final map and recommendations to USFS
- Chippewa County SORVA ORV Signs
- Luce County 911 Dry/Erase Laminated Wall Map