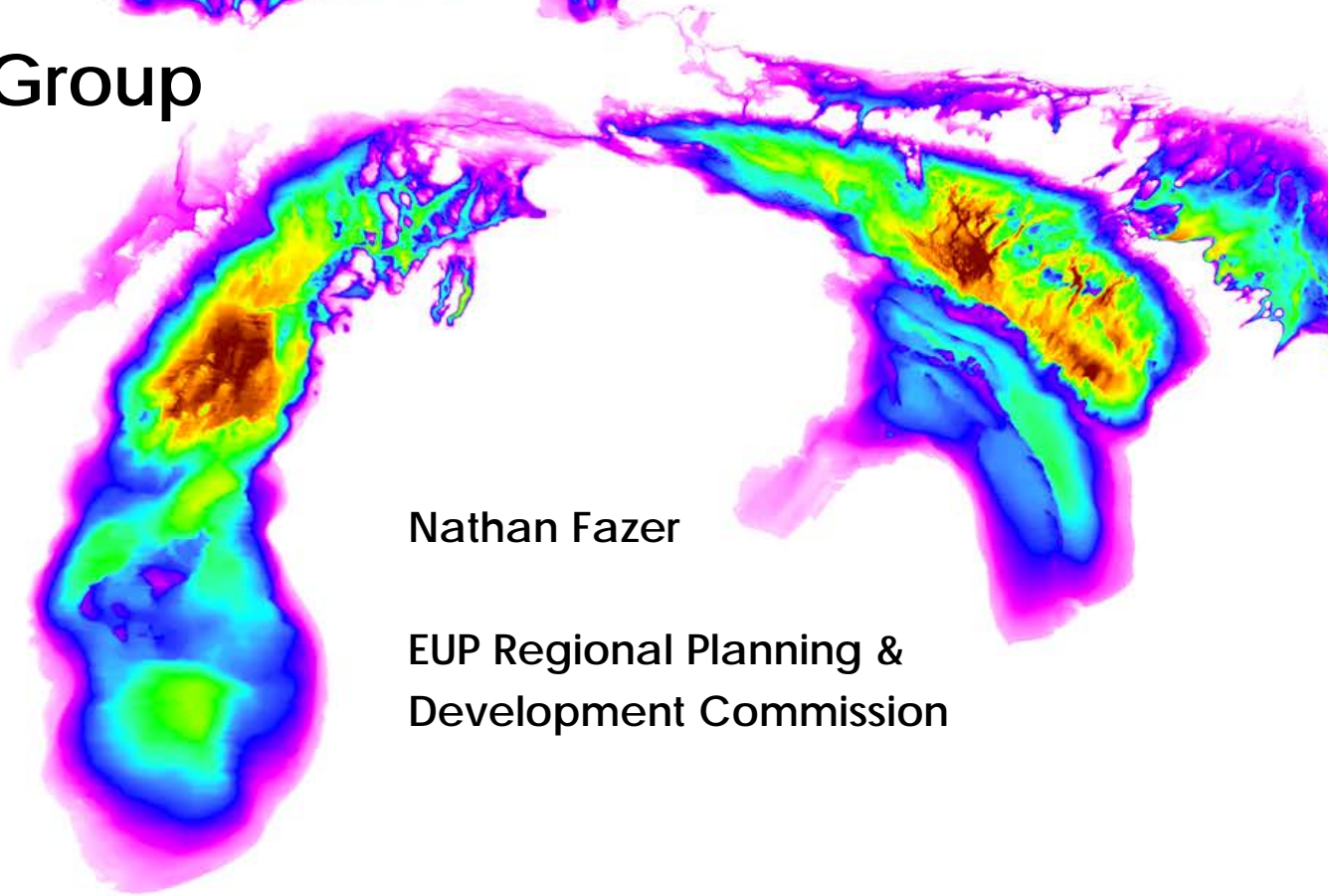


U.P. GIS User's Group



Nathan Fazer

**EUP Regional Planning &
Development Commission**

- **USGS Overview**
- **ESRI/Bing Maps Changes**
- **ArcGIS Online/Subscription Update**
- **EUP GIS Activities**
- **Trainings/Meetings**

ESRI/Bing Maps Changes

ESRI sent out an email mid-January which basically states that free, complimentary use of Bing maps in ArcGIS will be phased out starting February 28th, completely gone by September, 2013. ESRI products will remain “Bing ready” but will require a token key to access.

What does this mean for general users?

???

Bing maps API Terms: <http://www.microsoft.com/maps/product/terms.html> Spells out what keys can be used for, differences in basic vs enterprise keys, etc.

ArcGIS Online

AGO receives monthly “updates” and “tweaks”

Some of the features added over the last few months

- Filters – works similarly to a query in ArcGIS Desktop

- Attribute Tables – can view attributes for layers in map

- New web application templates

- Subscription users can publish time-enabled services

ESRI has also been updating basemaps

- ESRI’s World Imagery basemap contains 12” imagery of the U.P. collected 2010/2011. Some is leaf-on, some leaf-off.

ESRI Maps for Office released end of September, 2012.

GIS in the EUP

Trying to get more awareness to Townships and public

Mackinac County is working with Amalgam on seamless, Countywide parcel dataset

Regional Planning has reached agreements with Chippewa & Mackinac Counties to provide GIS support. We will be:

- Providing technical and mapping support for County Departments

- Working on GIS deployment within County Government

 - Web maps and free viewers for the short-term

- Working on GIS projects for Counties

- Provide some limited mapping and support to Townships

 - Specialty projects will still require contract

- Will be organizing workshops, trainings, etc. this summer for Township officials, assessors, etc.

Looking at new imagery flight with the State in 2015/2016 if Counties can fund

Also looking at LiDAR with State, depending on cost and partners

Utilizing our [ArcGIS Online Subscription](#).....

State's LiDAR Project - \$\$ and ¢¢ for U.P. LiDAR

Pricing for Base (Raw Point Cloud) + Deliverable 1 (Classified Point Cloud)

COUNTY	SQMILES	LIDAR_COST
Alger County	935	\$126,197
Baraga County	917	\$123,769
Chippewa County	1,573	\$212,369
Delta County	1,171	\$158,133
Dickinson County	776	\$104,814
Gogebic County	1,144	\$154,416
Houghton County	1,041	\$140,577
Iron County	1,211	\$163,480
Keweenaw County	553	\$74,649
Luce County	926	\$125,058
Marquette County	1,869	\$252,282
Menominee County	1,051	\$141,943
Ontonagon County	1,328	\$179,216
Schoolcraft County	1,221	\$164,869
Mackinac County	1,064	\$143,610
U.P.	16,781	\$2,265,382

Links of Interest

[“Oblique” Aerial Imagery of Great Lakes – Army Corps](#)

[MODIS Satellite Imagery – NOAA](#)

[NOAA Data Viewer](#)

[USGS National Map](#)

GIS Trainings?

Sent out several emails about GeoDatabase training. Will be moving forward with this. Have 10 people interested.

Also working on geodatabase sessions for MiCAMP.

Hoping to organize future trainings down the road & utilize our Universities

I'm interested in ideas or topics you may have for a group training

Fall User Meeting

Either Baraga or Escanaba